

GENERAL PLANTING NOTES

- THIS WORK INCLUDES, BUT IS NOT LIMITED TO THE FURNISHING OF ALL LABOR, MATERIALS, EQUIPMENT, FINAL GRADING, SEEDING, SOIL AMENDMENTS, ETC., AS MAY BE REQUIRED FOR A COMPLETE INSTALLATION. QUANTITIES SHOWN IN PLANT LISTS ARE FOR CONVENIENCE ONLY. PLANS SHALL GOVERN.
- THE LANDSCAPE CONTRACTOR SHALL NOTIFY THE LANDSCAPE ARCHITECT OF ANY DISCREPANCIES IN PLANT LOCATIONS OR INSUFFICIENT PLANT QUANTITIES DUE TO DIFFERENCES IN PLAN AND ACTUAL FIELD CONDITIONS.
- ALL TREE AND SHRUB MATERIAL SPECIFIED MUST MEET STANDARD INDUSTRY SPECIFICATIONS FOR THE CONTAINER SIZE INDICATED. DOWNSAIZING OR SUBSTITUTION OF PLANT MATERIAL WITHOUT PRIOR APPROVAL OF LANDSCAPE ARCHITECT WILL NOT BE ALLOWED.
- ALL LANDSCAPE AREAS SHALL BE GRADED TO A SMOOTH EVEN SURFACE PRIOR TO ANY PLANT INSTALLATION. ALL PLANT MATERIALS SHALL BE INSTALLED USING GOOD HORTICULTURAL PRACTICES IN ACCORDANCE WITH THE PLANS AND DETAILS.
- TREES SHALL NOT BE PLANTED CLOSER THAN FOUR (4) FEET FROM ANY WALKWAY OR PUBLIC SIDEWALK EXCEPT WHERE TREE WELLS OR PARKWAYS ARE PROVIDED IN THE SIDEWALK AREA. ALL TREE PLANTING WITHIN FIVE (5) FEET OF WALKS OR PUBLIC UTILITIES SHALL RECEIVE DEEP ROOT BARRIERS.
- TREE LOCATIONS SHOWN ON PLAN MAY REQUIRE ADJUSTMENT IN THE FIELD, WHENEVER FEASIBLE. TREES SHOULD BE PLANTED A MINIMUM OF TEN (10) FEET FROM ALL UNDERGROUND UTILITIES, STREETLIGHTS, HYDRANTS, AND OUT OF DRAINAGE FLOW LINES. SHOULD THIS NOT BE POSSIBLE, CONTACT THE LANDSCAPE ARCHITECT FOR DECISION ON PLACEMENT.
- ALL TREES IN TURF AREAS SHALL HAVE 12" MIN. CLR. CIRCUMFERENCE AROUND THE TRUNK BASE. PROVIDE 2" MIN. THK. MULCH AT BASE OF TRUNK.
- GROUND COVER TYPE SHOWN SHALL BE PLANTED IN ALL SHRUB AREAS AS SPECIFIED ON PLANS. GROUND COVER SHALL BE PLANTED AT 8" ON-CENTER UNIFORM TRIANGULAR SPACING, AND SHALL BE CONTINUOUS UNDER ALL TREE AND SHRUB MASSES AS SHOWN ON PLAN.
- MATURE PLANTINGS SHALL NOT INTERFERE WITH UTILITIES AND TRAFFIC SIGHT LINES.
- ALL AREAS PLANTED WITH GROUND COVER SHALL BE MULCHED WITH SHREDDED HARDWOOD MULCH. ALL REMAINING AREAS SHALL BE MULCHED WITH PINE STRAW.

LANDSCAPE REQUIREMENTS

REQUIRED	PROVIDED
PARKING LOT INTERIOR CANOPY COVERAGE 42,567 SF (30%)	14,716 SF* 24 TREES, 5 EXISTING TREES = 1,283 SF 19 PROPOSED LARGE SHADE TREES = 13,433 SF
* CANOPY COVERAGE PROVIDED PARTIALLY BY EXISTING TREES. EXISTING CANOPY COVERAGE CALCULATIONS ARE BASED ON AREA OF DRIP LINE OVERHANGING PARKING FACILITY.	
STREET YARD PLANTING TIBURON DRIVE (571 LF x 18') TREES REQUIRED	10,278 SF 17 (1/ 600 SF)
SHRUBS REQUIRED	102 (6/ 600 SF)
FOUNDATION PLANTING	12% FACADE AREA (ADJ. TO PARKING/DRIVE AISLE)
FITPARK NORTH SIDE (160LF x 45' x 12) + (220 x 33' x 12)	1,735 SF 4,930 SF
EAST SIDE (138 x 33' x 12)	546 SF
SOUTH SIDE (409 x 33' x 12)	1,619 SF
WEST SIDE (50 x 45' x 12) + (77 x 33' x 12)	575 SF
LOB III SOUTH SIDE (222 LF x 60.75' x 12)	1,618 SF
PRESERVED TREES ONSITE	2,394 SF

QUANTITY	SIZE	COMMON NAME	CREDITS
7	2"	PINE	7
24	2"	OAK	24
21	3"	PINE	21
61	3"	OAK	61
7	4"	PINE	7
1	4"	MAGNOLIA	1
1	5"	MAGNOLIA	2
12	5"	PINE	12
6	5"	OAK	6
17	6"	PINE	34
5	6"	OAK	10
1	6"	OAK	2
12	8"	PINE	24
5	8"	OAK	10
2	8"	OAK	4
6	10"	OAK	12
10	10"	PINE	20
1	12"	MAPLE	3
3	12"	PINE	9
5	13"	PINE	15
1	13"	OAK	3
6	14"	PINE	18
8	15"	PINE	24
5	16"	PINE	15
6	17"	PINE	18
1	18"	PINE	4
1	20"	PINE	4
1	24"	PINE	4
TOTAL CREDITS FOR PRESERVED TREES :			374

TREE MITIGATION REQUIREMENTS - ALL TREES LISTED BELOW ARE LOCATED WITHIN THE BUILDING 4 BUILDING PAD

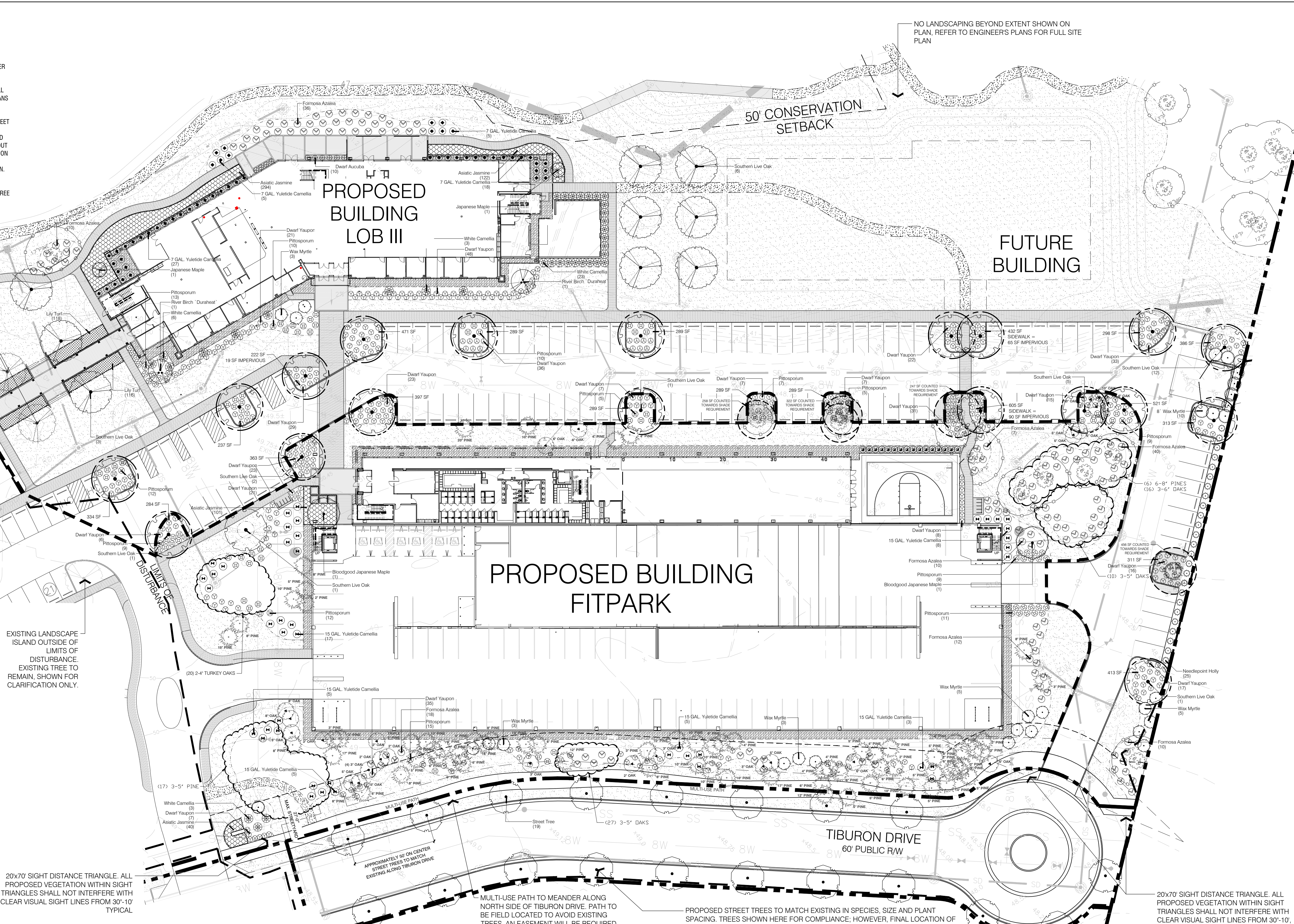
QUANTITY	SIZE	COMMON NAME	% MITIGATION
1	12"	PINE	50
2	13"	PINE	50
1	15"	PINE	50
1	16"	PINE	50
1	17"	PINE	50
3	18"	PINE	50
140" x 5 = 70/3 = 23.33 TREES REQUIRED FOR MITIGATION			

QUANTITY	SIZE	COMMON NAME	% MITIGATION
2	8"	OAK	100
1	10"	OAK	100
1	11"	OAK	100
2	12"	OAK	100
1	15"	OAK	100
1	18"	OAK	100
94" / 3 = 31.33 TREES REQUIRED FOR MITIGATION			
TOTAL = 23.33 + 31.33 = 55 TREES REQUIRED FOR MITIGATION			

TOTAL CREDITS FOR PRESERVED TREES : 374
PRESERVED TREE CREDITS FULFILLING MITIGATION REQUIREMENT: 55

OVERALL TREE REQUIREMENTS (15 TREES/DISTURBED ACRE)

REQUIRED: 12.94 ACRES DISTURBED x 15 TREES = 194 TREES REQUIRED
PROVIDED: 374 TREE CREDITS (EXISTING RETAINED TREES)
54 TREES PROPOSED - REFER TO PLANTING LEGEND
TOTAL: 428 TREES PROVIDED



EXISTING LANDSCAPE ISLAND OUTSIDE OF LIMITS OF DISTURBANCE. EXISTING TREE TO REMAIN, SHOWN FOR CLARIFICATION ONLY.

20x70' SIGHT DISTANCE TRIANGLE. ALL PROPOSED VEGETATION WITHIN SIGHT TRIANGLES SHALL NOT INTERFERE WITH CLEAR VISUAL SIGHT LINES FROM 30'-10' TYPICAL

MULTI-USE PATH TO MEANDER ALONG NORTH SIDE OF TIBURON DRIVE. PATH TO BE FIELD LOCATED TO AVOID EXISTING TREES. AN EASEMENT WILL BE REQUIRED FOR PORTIONS OF MULTI-USE PATH THAT EXTENDS BEYOND CITY ROW.

PROPOSED STREET TREES TO MATCH EXISTING IN SPECIES, SIZE AND PLANT SPACING. TREES SHOWN HERE FOR COMPLIANCE; HOWEVER, FINAL LOCATION OF STREET TREES SHALL BE FIELD LOCATED BY LANDSCAPE ARCHITECT ONCE ALL DRIVEWAYS, LIGHTING AND UTILITIES ARE INSTALLED

20x70' SIGHT DISTANCE TRIANGLE. ALL PROPOSED VEGETATION WITHIN SIGHT TRIANGLES SHALL NOT INTERFERE WITH CLEAR VISUAL SIGHT LINES FROM 30'-10' TYPICAL

PLANT SCHEDULE OVERALL

LARGE SHADE TREES	BOTANICAL NAME / COMMON NAME	CONT	CAL	RANGE	QTY
Acacia indica / Bloodgood Japanese Maple	8.8.8	3" CAL	8-10' HT	2	
Acer palmatum / Japanese Maple Green Leaf Japanese Maple	15 gal	2" CAL	6-8' HT	2	
Betula nigra / River Birch / Duraseal	8.8.8	3" CAL	10-12' HT	2	
Quercus virginiana / Southern Live Oak	8.8.8	4" CAL	10-12' HT	20	
Quercus virginiana / Southern Live Oak	SPREAD	9" CAL	14-16' HT	9	
Street Tree Quercus virginiana (Southern Live Oak) to match existing street trees along Tiburon Drive	8.8.8	2.2" CAL	10-12' HT	19	

SMALL SHADE TREES	BOTANICAL NAME / COMMON NAME	CONT	CAL	RANGE	QTY
Ilex x. Yucca R. Stevens / Nellie Stevens Holly	8.8.8	3" CAL	6-10' HT	1	
SHRUBS	BOTANICAL NAME / COMMON NAME	SIZE	RANGE	QTY	
Acacia indica / Bloodgood Japanese Maple	7 gal			10	
Acacia indica / Bloodgood Japanese Maple	7 gal			143	
Carex s. Hana Jaman / White Carnelia	--	6" HT		35	
Carex s. Yucca / 7 GAL Yucca Carnelia	7 gal	3-4' HT		55	
Carex s. Yucca / 7 GAL Yucca Carnelia	7 gal	3-4' HT		16	
Carex s. Yucca / 15 GAL Yucca Carnelia	15 gal			43	

Ilex cornuta / Neebport / Neebport Holly	7 gal	3-4' HT		25	
Ilex x. Yucca R. Stevens / Nellie Stevens Holly	7 gal	18-24' HT		412	
Myrica caroliniana / Wax Myrtle	--	9' HT		10	
Myrica caroliniana / Wax Myrtle	15 gal			19	
Pittosporum tobira / Pittosporum	10 gal	24-30' HT		107	
GROUND COVERS	BOTANICAL NAME / COMMON NAME	SIZE	RANGE	SPACING	QTY
Liriodendron / Big Blue / Lily Turf	1 quart	6-12" HT		18" o.c.	425
Trachypogon s. Asiatic / Asiatic Jasmine	1 qt	6-12" HT		24" o.c.	557
SOD/SEED	BOTANICAL NAME / COMMON NAME	SIZE	RANGE	SPACING	QTY
Zoysia japonica / Emerald / Emerald Zoysia	sod				

SYMBOL LEGEND

5" MAG	EXISTING TREE TO REMAIN WITH TREE PROTECTION FENCING
17" PINE	EXISTING PINE AND OAK TREES
17" OAK	EXISTING PINE AND OAK TREES
LARGE SHADE TREE	LARGE SHADE TREE COUNTED TOWARD PARKING LOT SHADE REQUIREMENTS (707 SF)
EXISTING SHADE TREE	EXISTING SHADE TREE COUNTED TOWARD PARKING LOT SHADE REQUIREMENTS

*NOTE: PRIOR TO ANY CLEARING, GRADING, OR CONSTRUCTION ACTIVITY, TREE PROTECTION FENCING WILL BE INSTALLED AROUND PROTECTED TREES OR GROVES OF TREES. NO CONSTRUCTION WORKERS, TOOLS, MATERIALS OR VEHICLES ARE PERMITTED WITHIN THE TREE PROTECTION FENCING

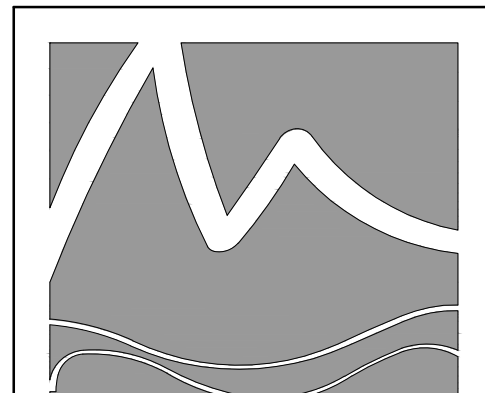
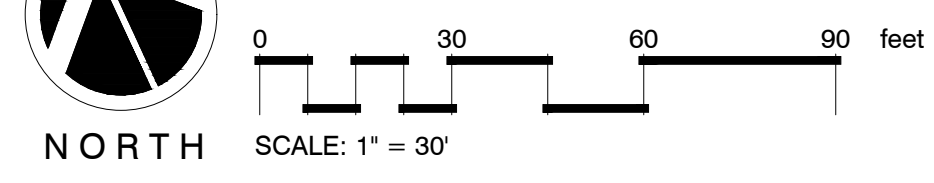
Approved Construction Plan

Name _____ Date _____

Planning _____

Traffic _____

Fire _____



MIHALY LAND DESIGN
PLANNING + LANDSCAPE ARCHITECTURE
330 MILITARY CUTOFF RD., Suite A3
Wilmington, NC 28405 910.392.4355



Revisions
2017-12-18: REVISED PLAN PER COMMENTS FROM COW.
2017-12-28: REVISED PLAN PER COMMENTS FROM COW.
2018-02-07: ADDED STREET TREES ALONG TIBURON PER CITY REQUEST.
2018-07-11: REVISED PLAN PER FIELD LOCATED TREES. CALCULATIONS REVISED ACCORDINGLY.

CLIENT
LIVE OAK BANK
1741 TIBURON DRIVE
WILMINGTON, NC

PROJECT
LIVE OAK BANK
BUILDING 3 AND FITPARK
TIBURON DRIVE
LANDSCAPE PLANS

Date: 11/27/2017
Phase: CD
Job Number: 560-07
Designed by: MLD
Drawn by: ALM
Checked by: JWM

Sheet Title: **PLANTING PLAN - OVERALL**

Sheet Number:
L1.0
of 1 sheets